

Maps and Specimen Plans
TO ACCOMPANY THE
MANUAL
OF INSTRUCTIONS FOR THE
Survey of Dominion Lands

Department of the Interior,

OTTAWA

7 M-

MAPS AND SPECIMEN PLANS

*To Accompany Manual of Instructions for the Survey of
Dominion Lands.*

Compiled Township Plan.

Plan of Survey of Settlement.

Plan of Survey of Group Lot.

Plan of Survey of Town of Grenfell.

Plan of Survey of Public Highway.

Plot of Chained Traverse No. 1.

Plot of Chained Traverse No. 2.

Plot of Micrometer Traverse.

Map Showing Boundaries of First System of
Survey in Vicinity of Prince Albert.

Map Showing Boundaries of Fifth System of
Survey.

Map Showing Boundaries of First and Second
Systems of Survey.

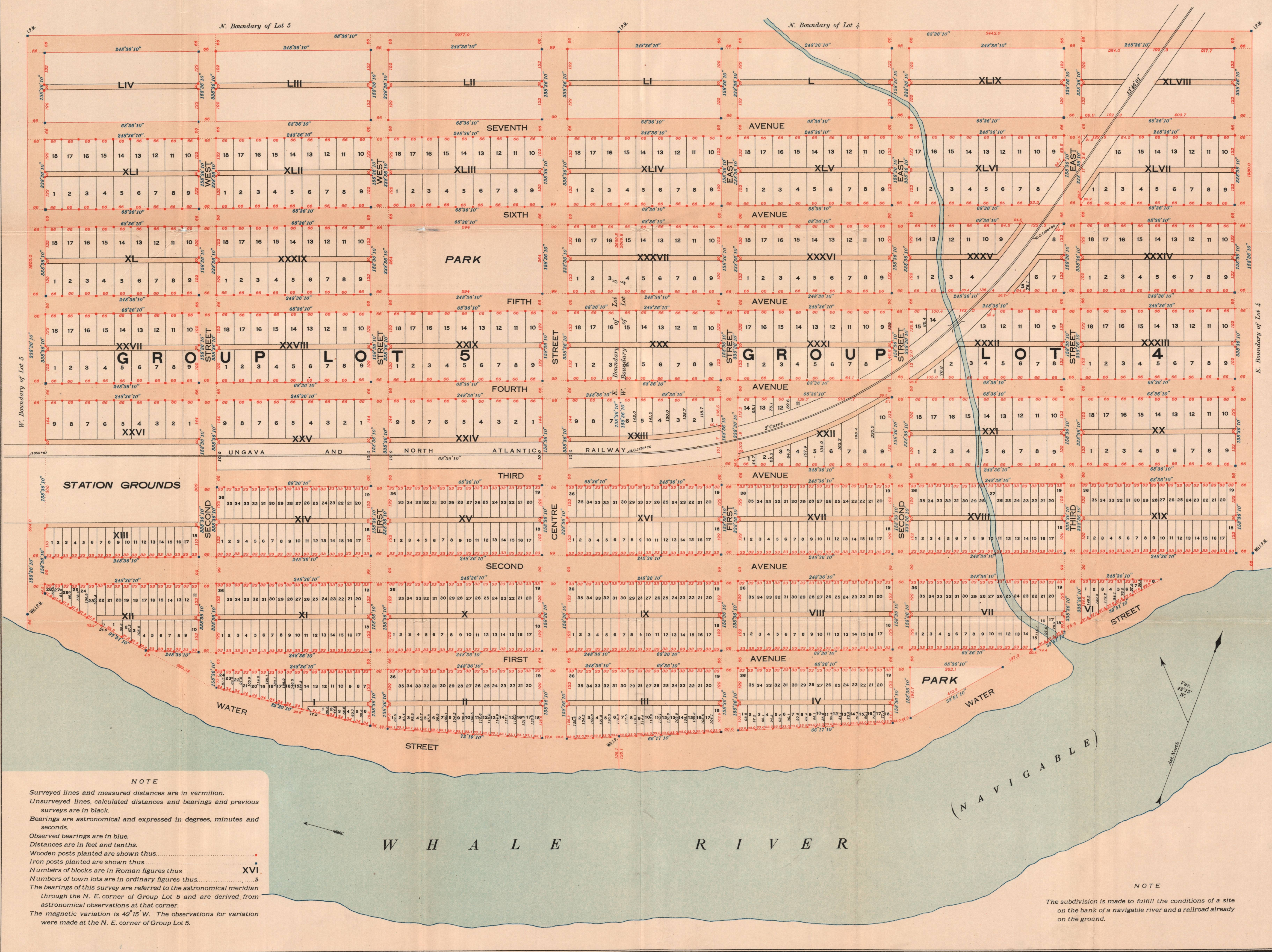


PLAN OF THE TOWN OF GRENFELL

BEING LOTS 4 AND 5, GROUP 432
UNGAVA DISTRICT

Surveyed by W. A. Smith, D.L.S., August, 1904.

Scale: 200 feet to an inch.

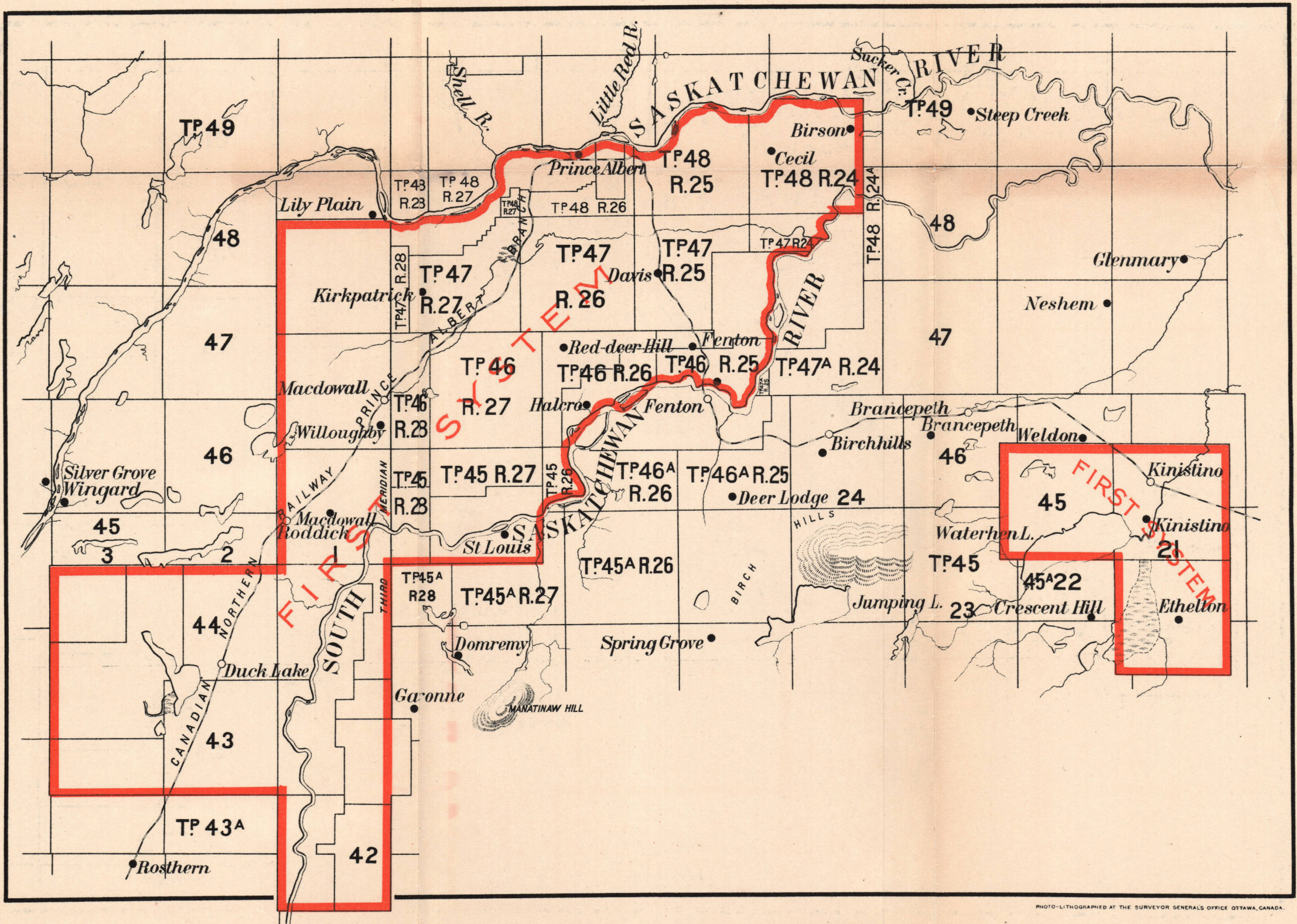


NOTE
Surveyed lines and measured distances are in vermilion.
Unsurveyed lines, calculated distances and bearings and previous surveys are in black.
Bearings are astronomical and expressed in degrees, minutes and seconds.
Observed bearings are in blue.
Distances are in feet and tenths.
Wooden posts planted are shown thus
Iron posts planted are shown thus
Numbers of blocks are in Roman figures thus XVI.
Numbers of town lots are in ordinary figures thus 5
The bearings of this survey are referred to the astronomical meridian through the N. E. corner of Group Lot 5 and are derived from astronomical observations at that corner.
The magnetic variation is 42° 15' W. The observations for variation were made at the N. E. corner of Group Lot 5.

NOTE
The subdivision is made to fulfill the conditions of a site on the bank of a navigable river and a railroad already on the ground.

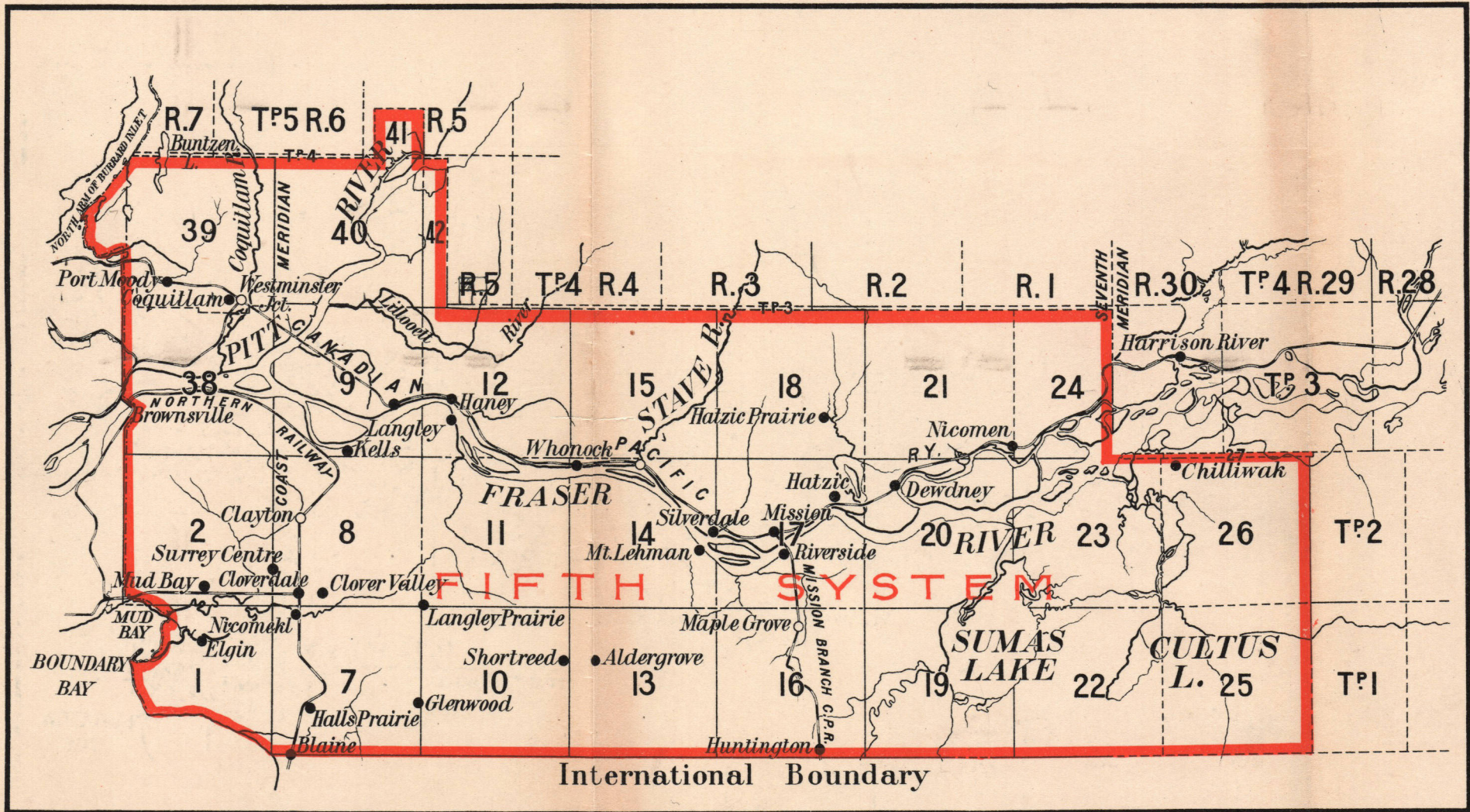
M A P
 SHOWING THE BOUNDARIES OF THE
FIRST SYSTEM OF SURVEY
 IN THE VICINITY OF PRINCE ALBERT
 PROVINCE OF SASKATCHEWAN

Scale: 6 miles to an inch.



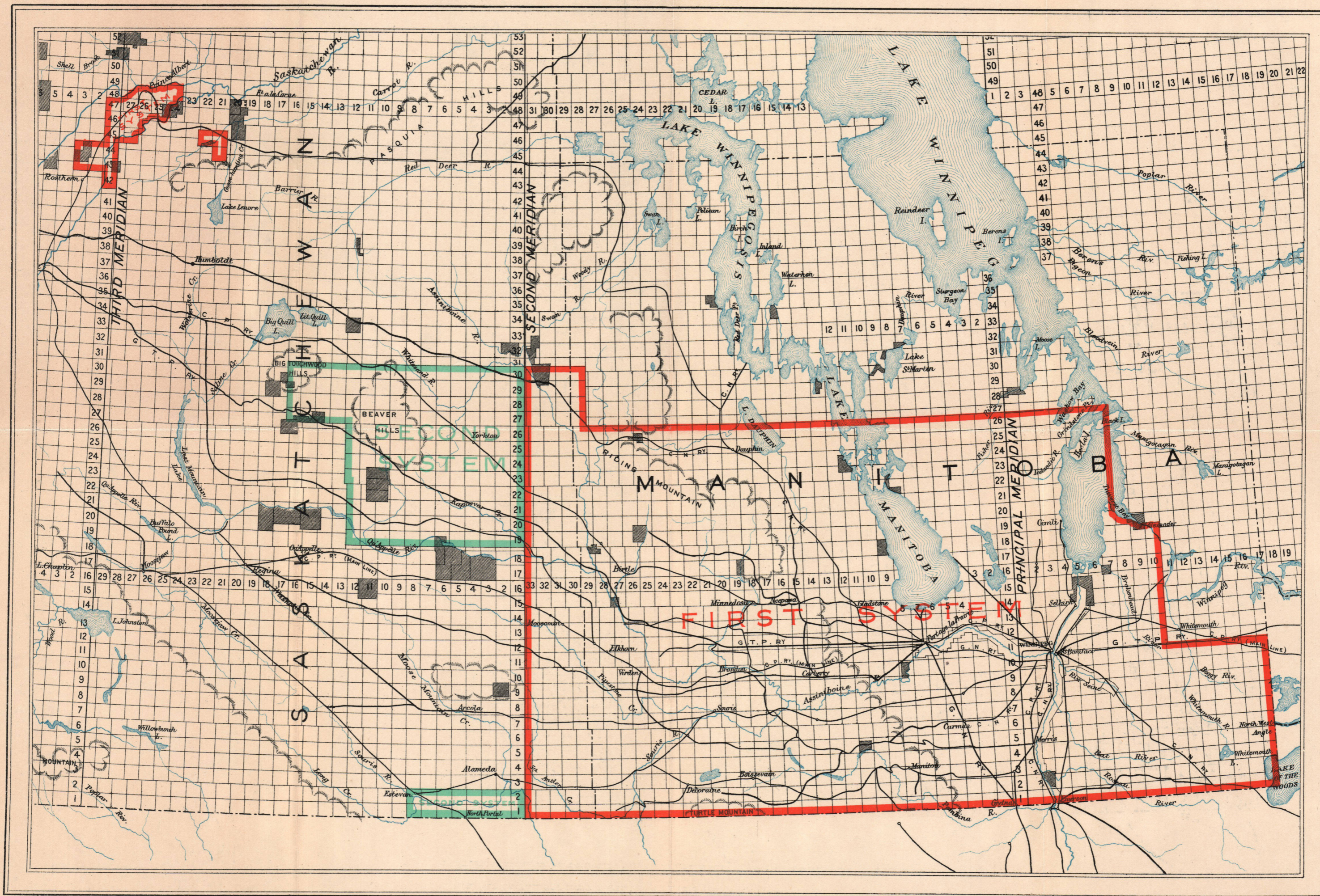
M A P
 SHOWING THE BOUNDARIES OF THE
FIFTH SYSTEM OF SURVEY
 IN THE
 PROVINCE OF BRITISH COLUMBIA

Scale: 6 miles to an inch.



Map showing the Boundaries of the
FIRST AND SECOND SYSTEMS OF SURVEY
 IN MANITOBA AND SASKATCHEWAN.

Scale: 35 miles to an inch.



Boundaries of First System are shown in red.
 Boundaries of Second System are shown in green.

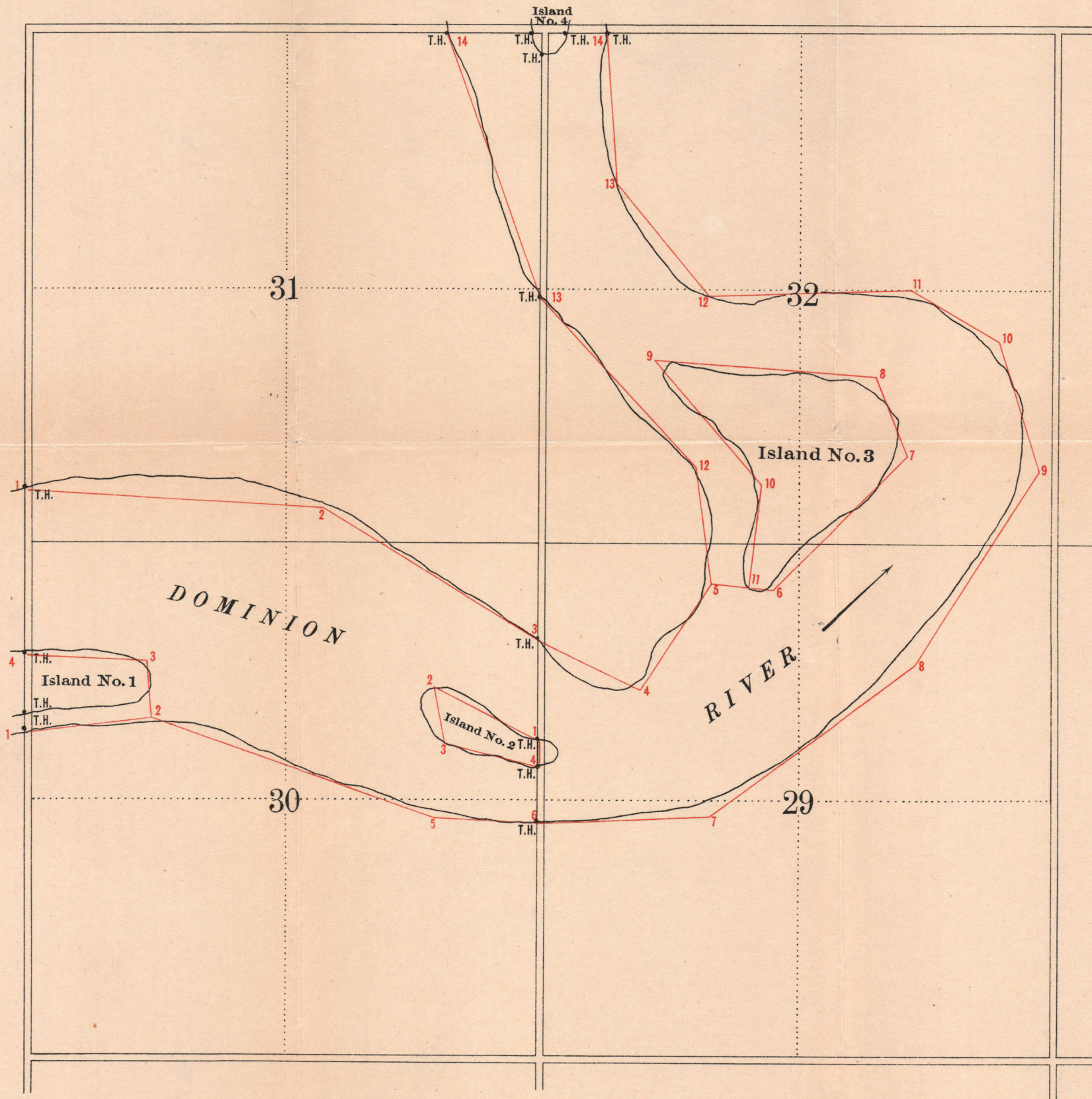
LITHOGRAPHED AT THE SURVEYOR GENERAL'S OFFICE OTTAWA, CANADA.

TRAVERSE OF DOMINION RIVER

Township 50, Range 3, West of Mer.

Surveyed by John Brown, D.L.S., 1909.

Scale: 20 chains to an inch.

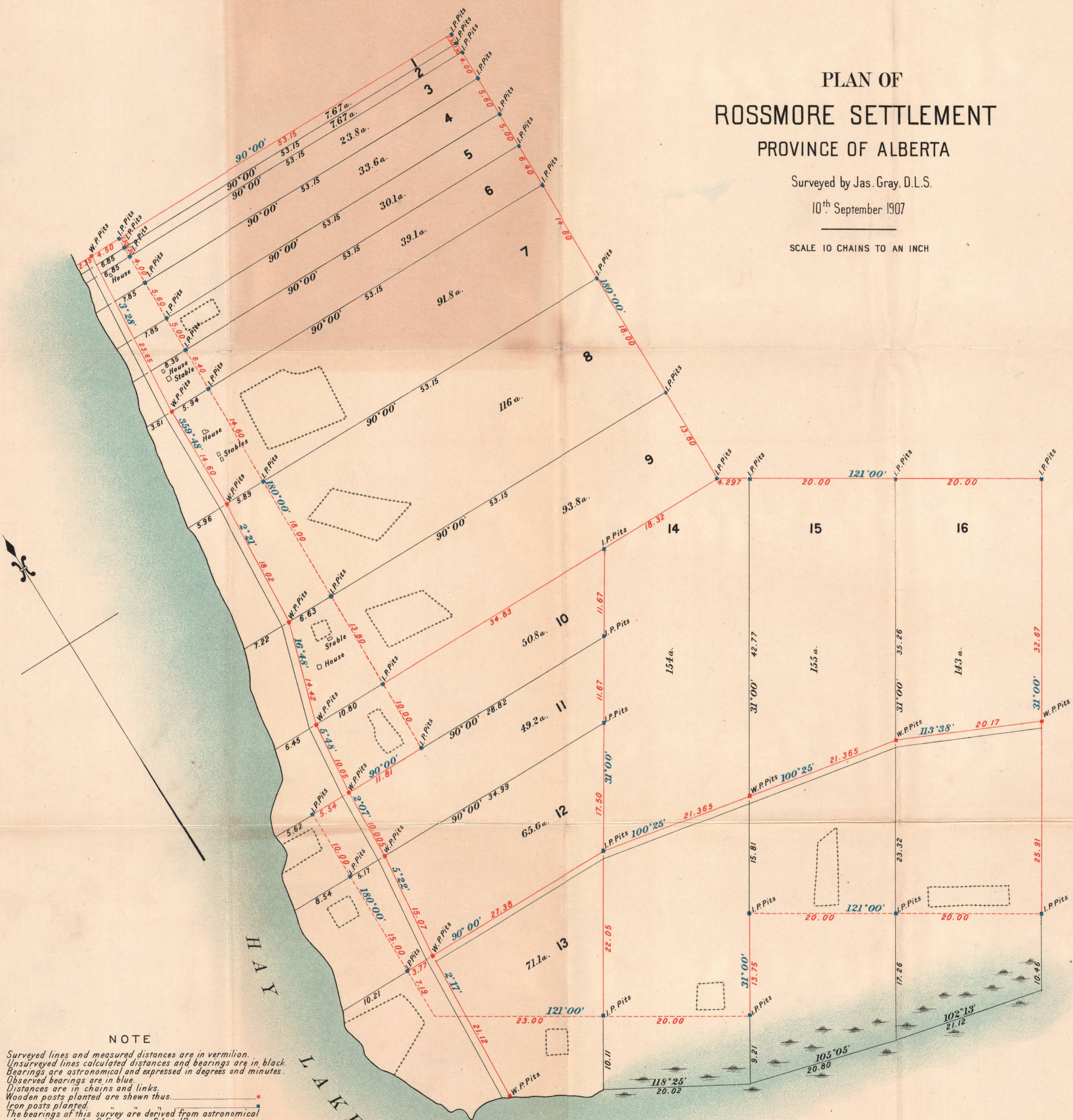


PLAN OF ROSSMORE SETTLEMENT PROVINCE OF ALBERTA


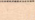
Surveyed by Jas. Gray, D.L.S.

10th September 1907

SCALE 10 CHAINS TO AN INCH



NOTE

Surveyed lines and measured distances are in vermilion.
Unsurveyed lines calculated distances and bearings are in black.
Bearings are astronomical and expressed in degrees and minutes.
Observed bearings are in blue.
Distances are in chains and links.
Wooden posts planted are shewn thus. 
Iron posts planted. 
The bearings of this survey are derived from astronomical observations at the S.E. corner of Lot 12.

(Affidavit not printed)

10.00

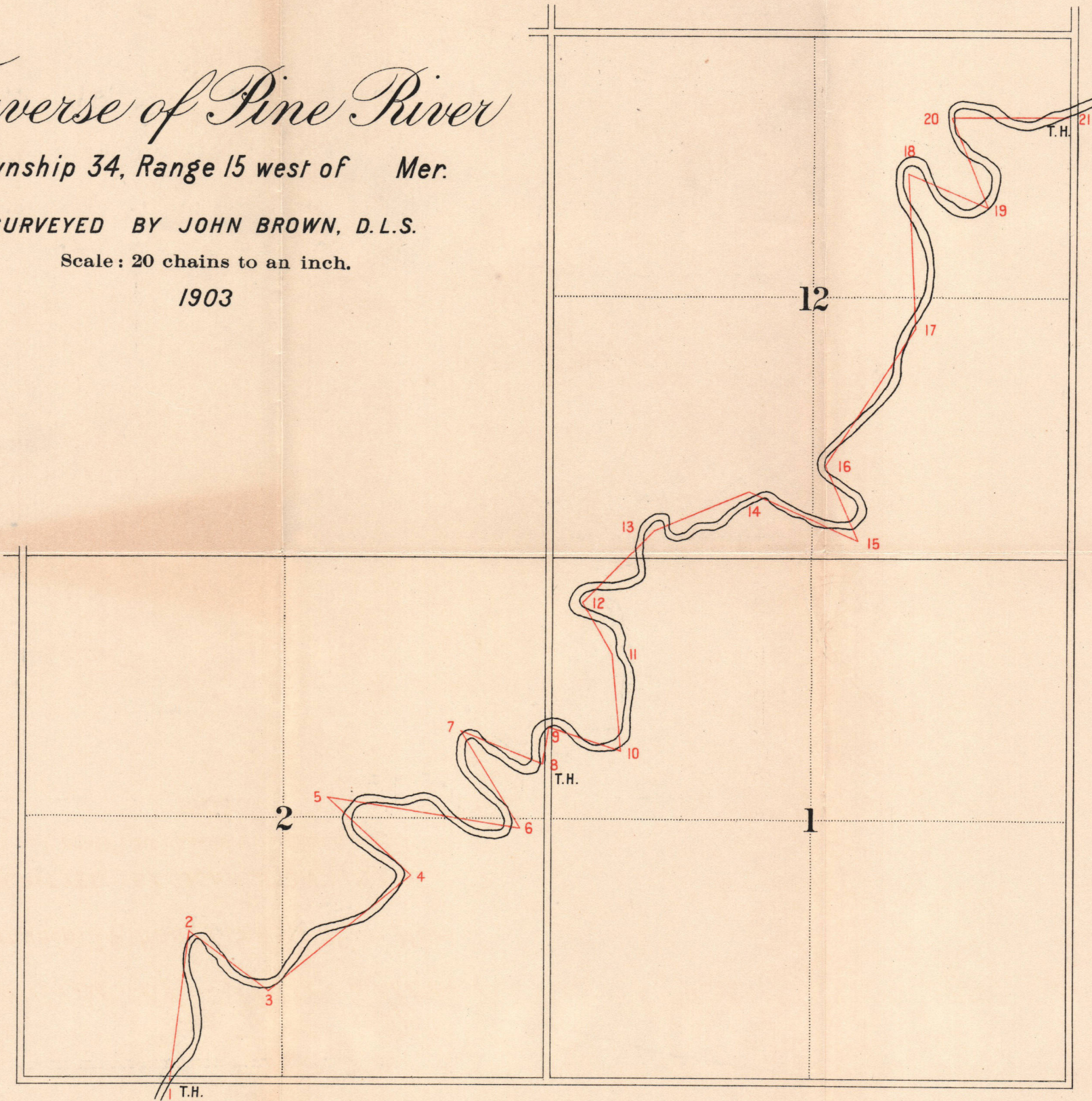
Traverse of Pine River

Township 34, Range 15 west of Mer.

SURVEYED BY JOHN BROWN, D.L.S.

Scale: 20 chains to an inch.

1903



Specimen of compiled township plan

ALBERTA

Plan of Township Range West of the Meridian

SECOND EDITION (CORRECTED)

SCALE 40 CHAINS TO AN INCH

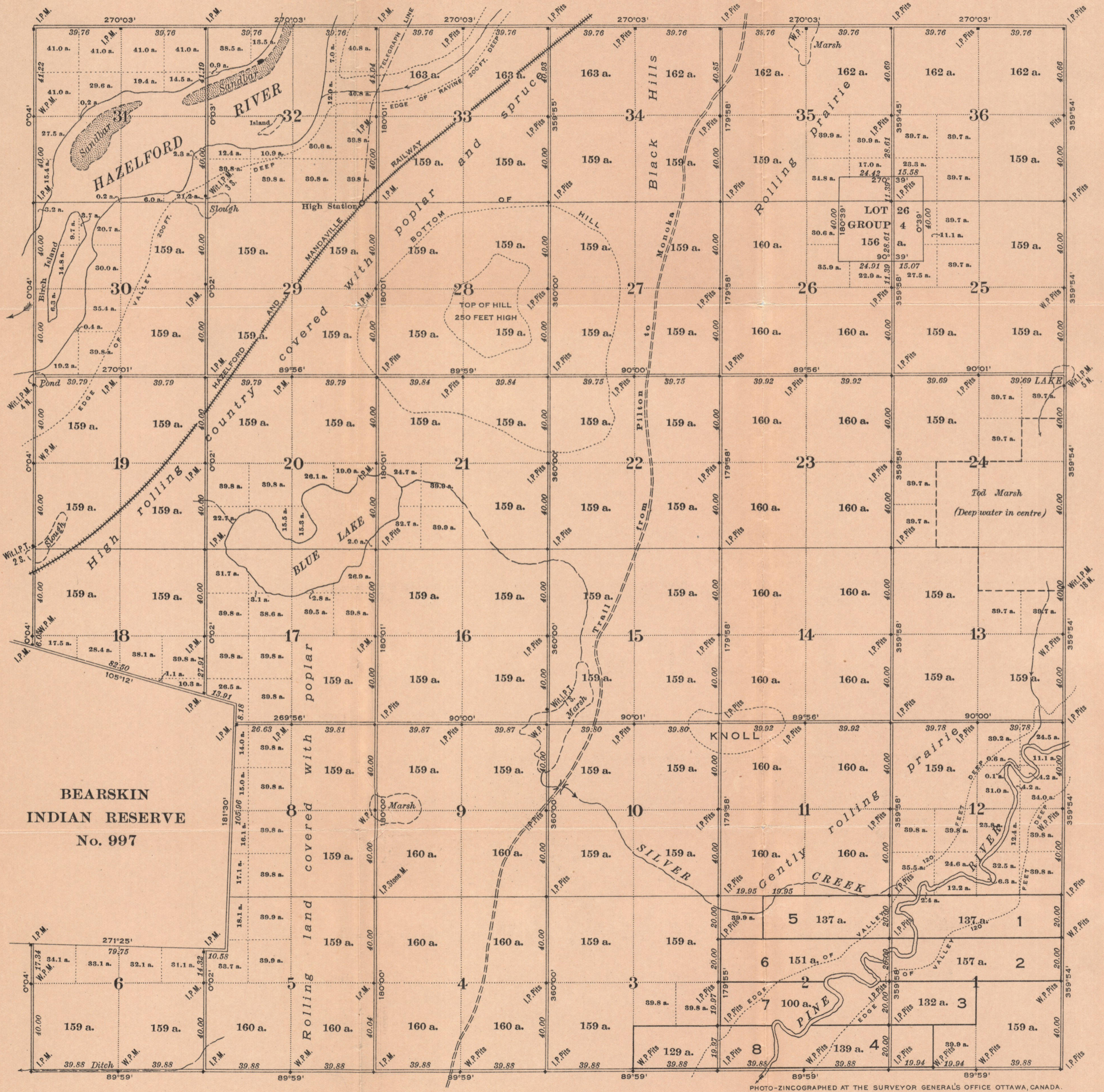


PHOTO-ZINCographed AT THE SURVEYOR GENERAL'S OFFICE OTTAWA, CANADA.

Compiled from official surveys by

J. Green, D.L.S. 22nd July, 1896
 G. Lee, D.T.S. 9th December, 1902
 J. Brown, D.L.S. March, 1908

Areas in acres are marked on all lands surveyed.

Distances are in chains.

Bearings are reckoned from the astronomical meridian through the centre of the township.

Areas are taken to the banks of Pine and Hazelford rivers.

Lot numbers are shown thus 5

Department of the Interior, Ottawa, 28th January, 1910.

Approved and Confirmed.

Deville

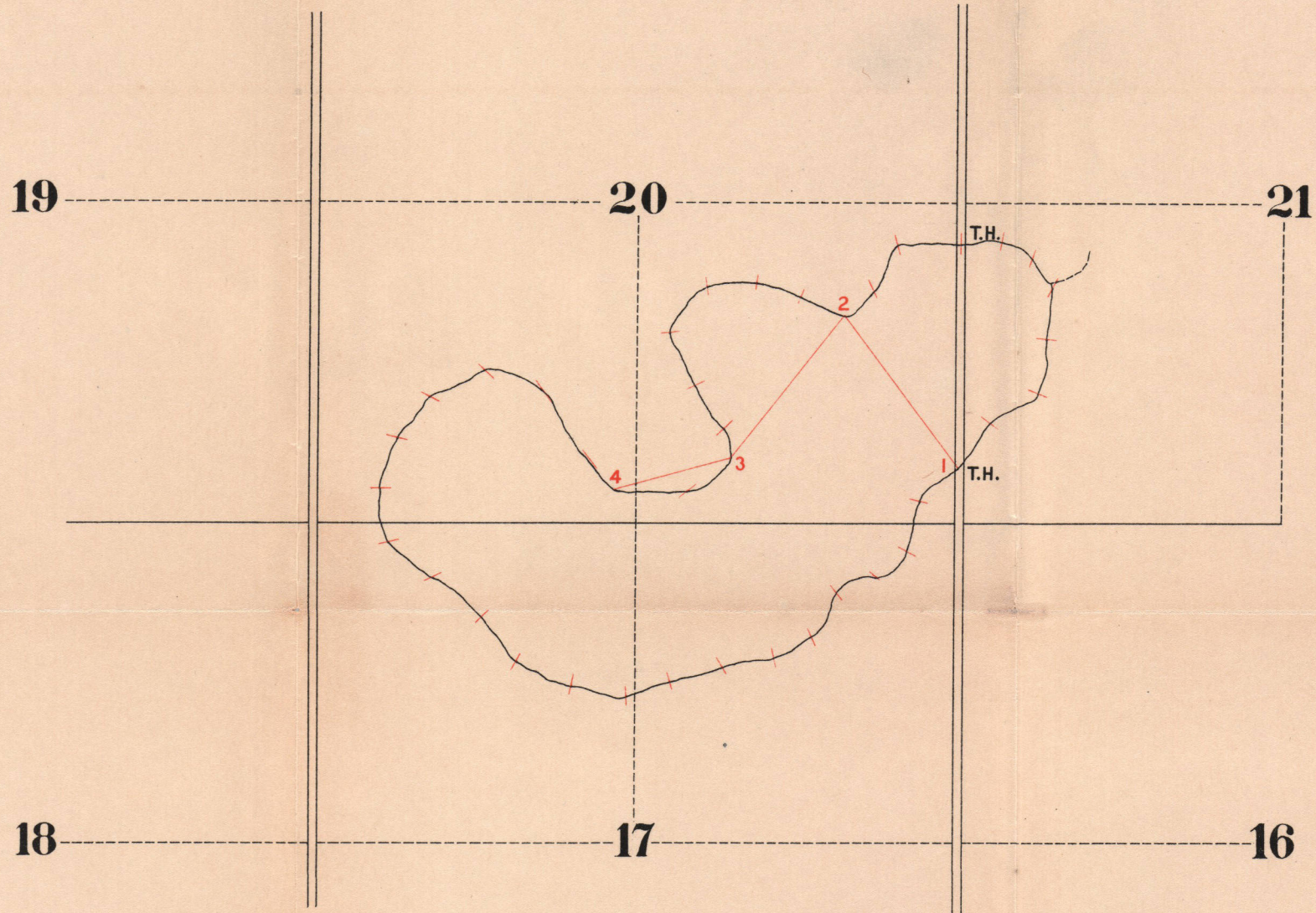
Surveyor General.

Traverse of Blue Lake

Township 34, Range 15 west of Mer.

SURVEYED BY JOHN BROWN, D.L.S., 1909.

Scale: 20 chains to an inch.

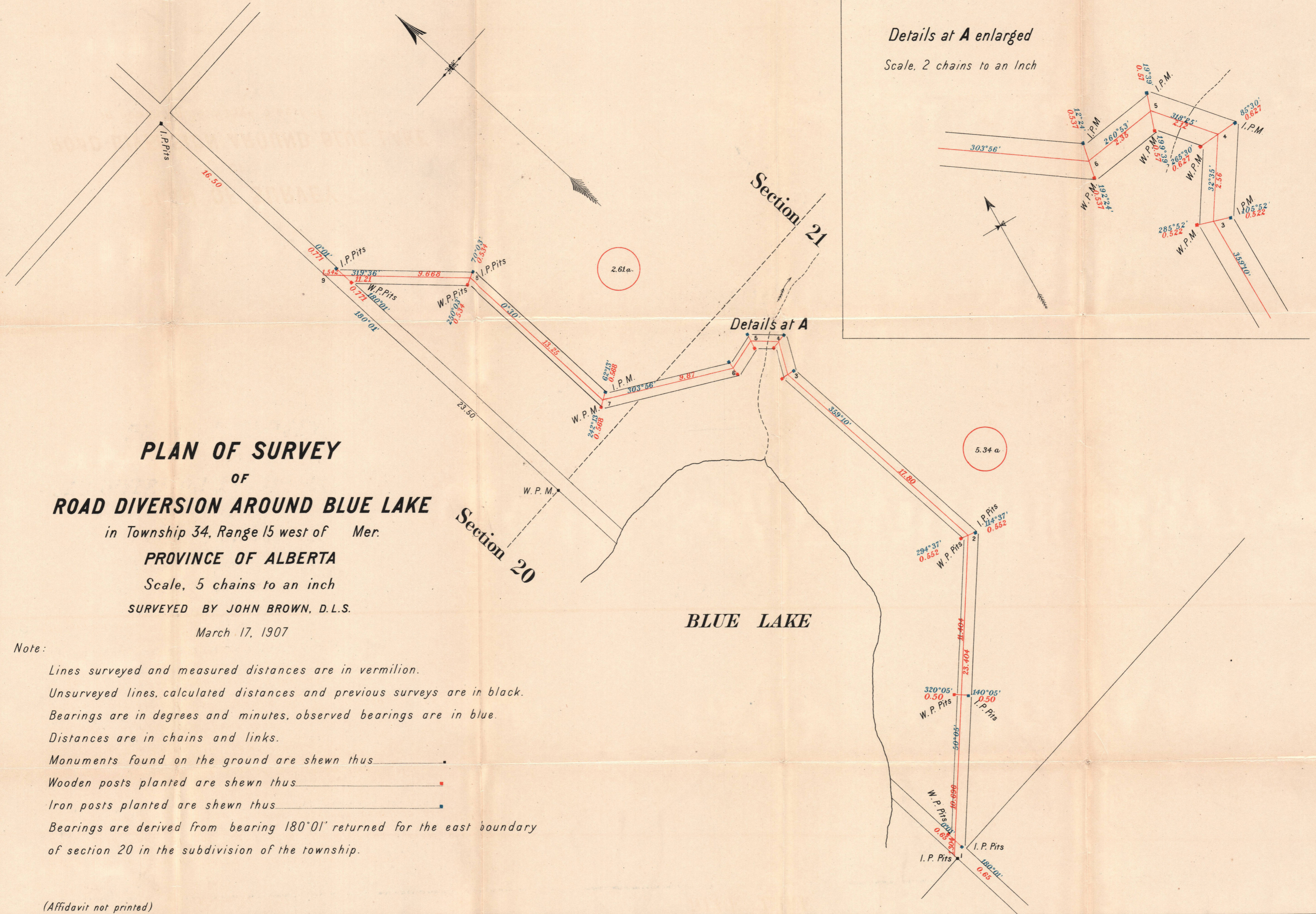


PLAN OF SURVEY
 OF
ROAD DIVERSION AROUND BLUE LAKE
 in Township 34, Range 15 west of Mer.
PROVINCE OF ALBERTA
 Scale, 5 chains to an inch
 SURVEYED BY JOHN BROWN, D.L.S.
 March 17, 1907

Note:

- Lines surveyed and measured distances are in vermilion.
- Unsurveyed lines, calculated distances and previous surveys are in black.
- Bearings are in degrees and minutes, observed bearings are in blue.
- Distances are in chains and links.
- Monuments found on the ground are shewn thus
- Wooden posts planted are shewn thus
- Iron posts planted are shewn thus
- Bearings are derived from bearing 180°01' returned for the east boundary of section 20 in the subdivision of the township.

(Affidavit not printed)

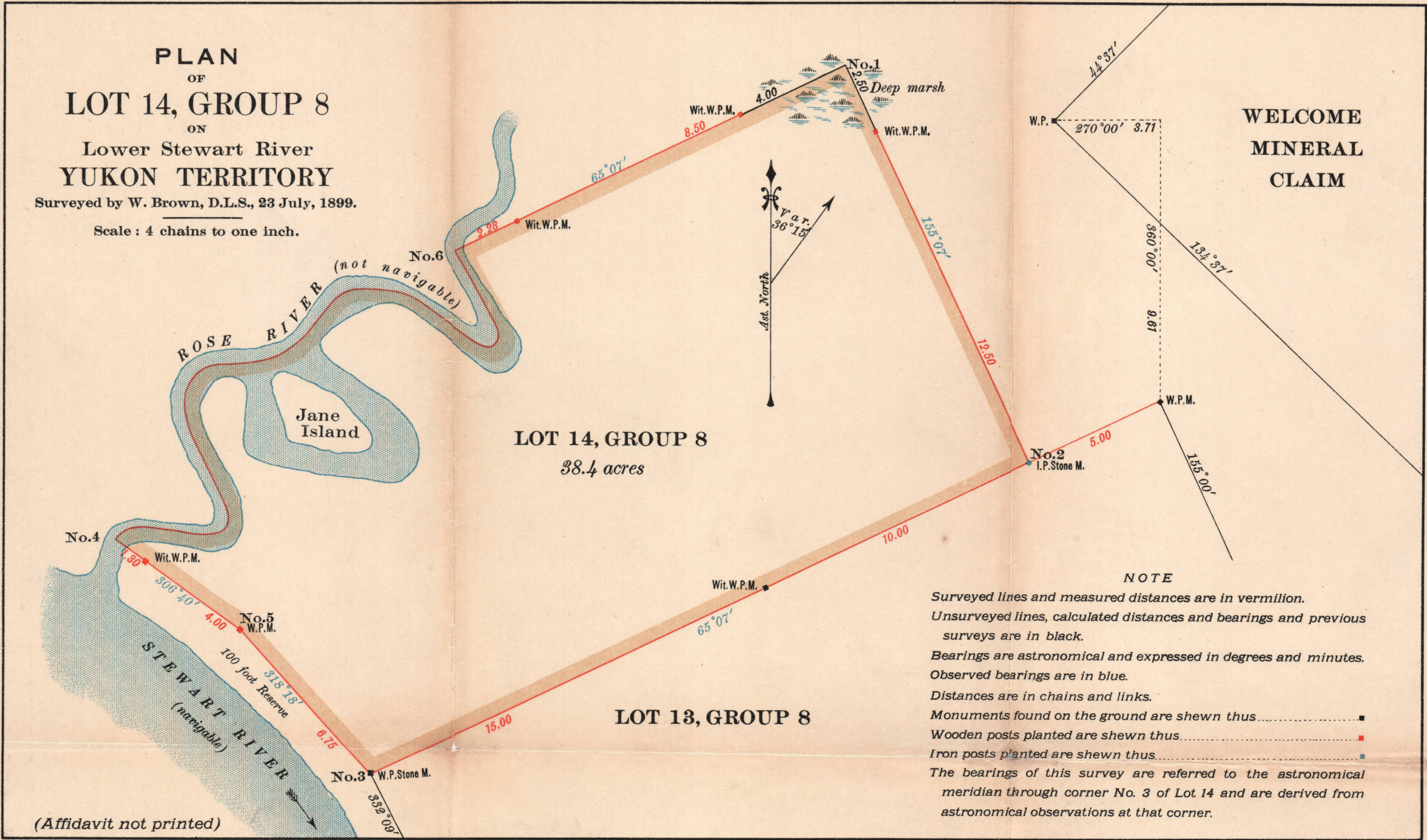


SPECIMEN PLAN OF SURVEY OF GROUP LOT.

PLAN
OF
LOT 14, GROUP 8
ON
Lower Stewart River
YUKON TERRITORY

Surveyed by W. Brown, D.L.S., 23 July, 1899.

Scale: 4 chains to one inch.



(Affidavit not printed)

NOTE
 Surveyed lines and measured distances are in vermilion.
 Unsurveyed lines, calculated distances and bearings and previous surveys are in black.
 Bearings are astronomical and expressed in degrees and minutes.
 Observed bearings are in blue.
 Distances are in chains and links.
 Monuments found on the ground are shewn thus ■
 Wooden posts planted are shewn thus ■
 Iron posts planted are shewn thus ■
 The bearings of this survey are referred to the astronomical meridian through corner No. 3 of Lot 14 and are derived from astronomical observations at that corner.